

ASCNE FARM TRIAL

MAINE MARITIME MADNESS FARM TRIALS /PROSPECT MAINE

JULY 20 , 2012

FARM TRIAL #1/ MULTI STOCK (sheep/ducks)

FARM TRIAL #2/ DUCKS ONLY

ASCA Sanction Pending/ASCA Rules

Judge: Jan Wesen Course Director: Mary Lupien Show Secretary: Diane Menard

16 RUNS AVAILABLE TRIAL #1 AND 20 RUNS AVAILABLE TRIAL #2

Stock will be Katahdin sheep and CALL ducks. Trial surface is grass and dirt.

7:15 – 7:45 AM: check-in 8:00 AM: Handler's Meeting. Trial will begin immediately after Handler's Meeting. All pre-entries must be postmarked on or after June 20,2012 through July 5, 2012. No pre-entries will be accepted with a postmark before June 20. Trial #2 will begin after Trial #1.

All non-ASCA registered must be registered with a tracking number from ASCA to receive titles. See ASCA website (www.asca.org) for details. You may also register for a tracking number at the trial. Entries will be accepted in postmark order. In the case of duplicate postmark entries a random draw will be made of those entries to determine the order of acceptance. Run order will be drawn the evening of July 19th.

Entry Forms are available on the ASCA website (www.asca.org). Day of show entries will be allowed if space is available. A waiting list will be established if the trial fills. Entry fees will only be refunded if the trial AND your spot is filled. Bitches in heat will run in the order of the draw.

Please include your email address on the entry form and we will confirm that your entry was accepted or if you're on the waiting list. Entrants are responsible for all damage caused by themselves, their dogs, and their family members. Please clean up after your dogs. All dogs must be ON LEASH at all times except during their run. Failure to comply with the above will result in the entrant being asked to leave and no refunds will be given. Please note ASCA's Bite Incident policy will be strictly enforced if a dog is involved in an altercation with another dog or person. **NO entry from dog/handler disqualified from competing in ASCA stock trials or a person not in good standing will be accepted into the trial.**

You can get a leg at each trial under the same judge because it is considered different stock.

Pre-Entry Fees: \$40.00 (multi stock trial #) Day of Trial entry cost an additional \$5 per class if available.

Pre-Entry Fees: \$20 (duck trial #2) Day of Trial entry cost an additional \$5 per class if available.

Make checks payable to: ASCNE and mail to Diane Menard, 39 Allen Rd. Sturbridge, MA 01566

Phone: H: 508 347 7777 cell: 508 615 3668 email: BLACKBIRCH.FARM@YAHOO.COM

Awards: 1st thru 4th RIBBONS.

Injured Livestock Expenses including Veterinary and disposal fees will be the responsibility of the handler/owner. Replacement costs of livestock are sheep \$175, ducks \$25 per head.

MOTELS AND CAMPGROUNDS

BELFAST HARBOR INN (RECOMMENDED)

(LARGE FIELD; ON THE OCEAN)
1-800-545-8776
91 SEARSPORT AVE. (ROUTE 1)
BELFAST, ME 04915
13 MILES AWAY

COMFORT INN OCEAN'S EDGE

(ON THE OCEAN; RESTAURANT & MOTEL)
207-338-2090
159 SEARSPORT AVE. (ROUTE 1)
BELFAST, ME 04915
13 MILES AWAY

SEARSPORT SHORES CAMPGROUND

(ON THE OCEAN)
207-548-6059
216 WEST MAIN STREET
SEARSPORT, ME 04974
11 MILES AWAY

BUCKSPORT MOTOR INN(recommended)

(SMALL, CLEAN; WALKWAY ON RIVER)
1-800-626-9734
70 US ROUTE 1
BUCKSPORT, ME 04416
6 MILES AWAY

ECONOLIDGE

(CLOSE TO AIRPORT, SHOPPING, CASINO)
207-945-0111
327 ODLIN RD
BANGOR, ME 04401
21 MILES AWAY

RV CAMPING: LIMITED SPACE FOR
SELF-CONTAINED RV'S WILL BE
AVAILABLE FOR \$10.00 A
NIGHT. CONTACT LAURA HAMER FOR
MORE DETAILS AT 207-567-3567
OR VIA EMAIL AT LMFarm@fairpoint.net

-cont-

HOLIDAY INN

(CLOSE TO AIRPORT, SHOPPING, CASINO)
207-947-0101
404 ODLIN RD
BANGOR, ME 04401
21 MILES AWAY

VETERINARIANS

Eastern Maine Emergency Veterinary Clinic
(207) 989-6267 15 Dirigo Dr Brewer, ME 04412
Weekday veterinarians
Ridgerunner Vet Clinic
559 South Main Street Winterport, ME 04496
(207) 223-2596
Searsport Veterinary Hospital
322 West Main St Searsport, ME 04974
(207) 548-2924
(Weekends: every other Saturday)
Bucksport Veterinary Hospital
11 Gross Point Rd Orland, ME 04472
(207) 469-3614
(open Saturdays until noon)

DIRECTIONS TO TRIAL SITE

LONE MOOSE FARM

63 HAWES BRIDGE RD PROSPECT, MAINE 04981

From the South: Take I-95 to Exit 113. Follow ME Route 3 north for 44 miles to US Route 1 north. Turn left onto US Route 1 north. Follow for 10.6 miles. Take a left onto US Route 1A north. Go 4.4 miles. Turn left onto the Hawes Bridge Rd. Lone Moose Farm is 0.2 miles on the right.

From the East: From the bridge in downtown Ellsworth (on RT 1) follow US Route 1 south/ME Route 3 south for 20.6 miles. Turn right onto Route 174 at the light at the end of Penobscot Narrows Bridge. Go 3.8 miles. At stop sign, cross US Route 1A onto the Hawes Bridge Rd. Lone Moose Farm is 0.2 miles on the right.

From the North: I-95 to Exit 180. Take a left off of the exit ramp onto the Coldbrook Road. Follow for 1.6 miles. Just before the light, bear right onto US Route 1A south. Follow for 14.9 miles. At junction of rte 174 and the Hawes Bridge Road, directly after Maddie's Place and the Prospect fire dept., take a right onto the Hawes Bridge Rd. Lone Moose Farm is 0.2 miles on the right.

ASCA Multi stock Farm Trial Course #1 Description—20 min time limit-10 min and 3 min warnings

Sheep portion

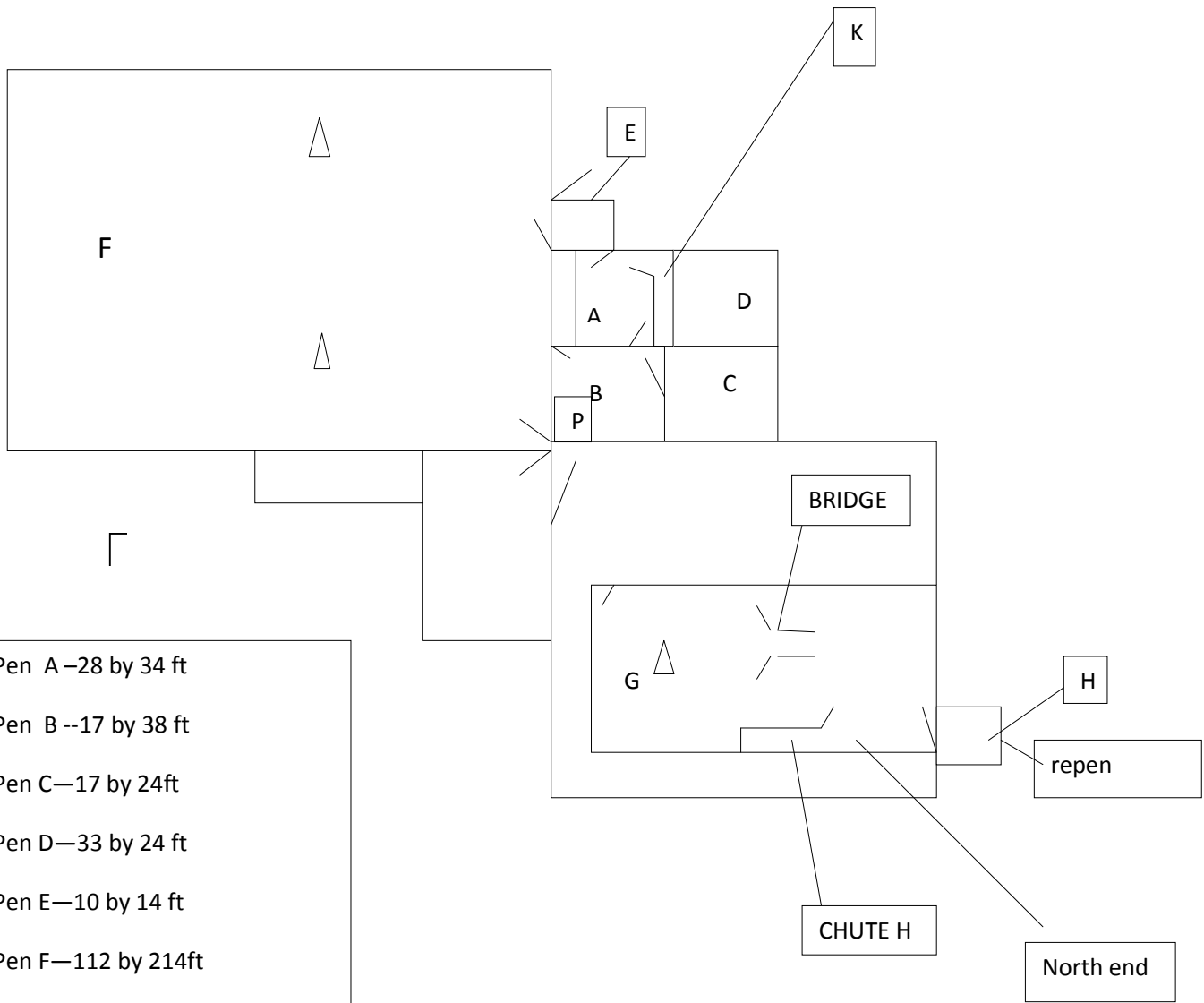
1. Start with the 10 sheep in Pen E and sort 5 marked thru sorting chute K into Pen B (**SORT WORK 25 points**)
2. Take the sorted sheep from Pen B , thru pen P into Pen F.(**PEN WORK/25 POINTS**)
3. Take these sheep into approximate center of Pen F and Hold them between 2 markers(cones) until the judge calls time. (**HOLD TASK 15 points**)
4. Exhaust the sheep into Pen P
5. ***Leash*** your dog and proceed to duck portion of test.

Duck portion

1. Go to Pen G and leave your dog at the cone for the gather. Open handlers may go halfway between the ducks and the dog and then send the dog. Advanced handlers must remain at the cone and send the dog from there. You may fetch or drive the ducks back to the cone and at least 3 ducks must go around the cone before starting the next obstacle. (**GATHER TASK 25 POINTS**)
2. Fetch or drive to north end of chute , push the ducks into the chute and open the gate at the end of chute.(all ducks must complete this exercise to go on)(**CHUTE TASK/25 POINTS**)
3. Drive or fetch the ducks over the bridge (real raised garden bridge)(at least 1 duck must complete this to go on) and then exhaust the ducks into Pen H. (**BRIDGE TASK/15 POINTS**) Open handlers will have 2 wings on the bridge to assist then and Advanced handlers will have one wing.

Each task must be completed in order to move on to the next . Any ties will be broken by the highest score under the **BRIDGE TASK DUCK** section.

MULTI STOCK/ FARM TRIAL #1



- Pen A—28 by 34 ft
- Pen B --17 by 38 ft
- Pen C—17 by 24ft
- Pen D—33 by 24 ft
- Pen E—10 by 14 ft
- Pen F—112 by 214ft
- Pen G—64 by 90 ft
- Pen H—8ft by 8ft
- Pen P—7 by 10 ft
- Sort chute K --1ft wide
- Bridge 2ft by 4ft
- Duck chute H—1ft wide
- All gates are min of 4ft

DUCKS/TRIAL #2

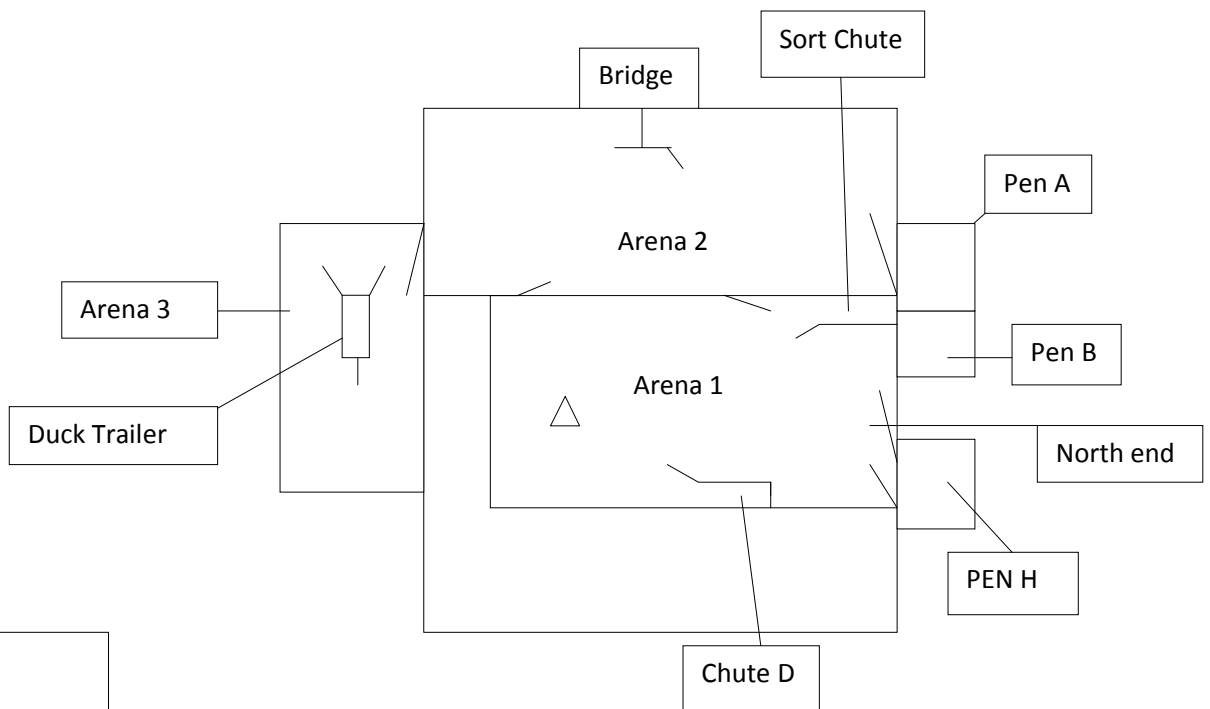
ASCA Ducks only Farm Trial Course #2 Description—18 min time limit- 3 min warning

All gates must be closed before time is called.

1. Dog and Handler start at cone in arena 1 . Ducks will be set out at north end of arena 1. There will be an outrun min of 75 ft to gather the ducks back to the cone and go around the cone clockwise. Open handlers may walk halfway to the set out ducks before sending their dogs. Advanced handlers will remain at the cone as they send their dog. (**GATHER 25 PTS**)
2. Handler and dog take all the ducks through sort chute and sort 5 marked head into pen A and put the remaining ducks into pen B using the sorting chute and the sorting chute gate must be closed before proceeding. (**SORT WORK-25 PTS**)
3. Move the 5 ducks in Pen B into Pen H. (**PEN WORK-25PTS**)
4. Move the 5 ducks in Pen A into Arena 2 and take the 5 ducks over the raised garden bridge, Open handlers must complete the task with a minimum of 3 ducks before moving on. Advanced handlers must get all ducks over the bridge before moving on. The Bridge will be against a fence. (**BRIDGE TASK-15 PTS**)
5. Move the ducks into Arena 3 and put all 5 ducks into the duck trailer (there will be wings on trailer sides) and then close trailer door. Pull the lightweight trailer into arena 1 to the cone and take the ducks out of the trailer. (**TRAILER TASK-15PTS**)
6. Put all 5 ducks through Chute D from south to north, open gate at end of chute and reopen in Pen H (**CHUTE TASK-25PTS**)

*Any ties will be broken by the highest score under the **BRIDGE TASK** section.*

DUCKS/TRIAL #2



- Pen A – 8 by 8 ft
- Pen B -- 8 by 8 ft
- Pen H — 8 by 8 ft
- Arena 1 – 64 by 90 ft
- Arena 2 – 100 by 30 ft
- Arena 3 – 60 by 70 ft
- Sort chute – 1 ft wide
- Bridge 2ft by 4ft
- Duck chute D — 1ft wide-
- All gates are min of 4ft