



New England Aussie

www.ascne.org

March 2015

Official publication of the Australian Shepherd
Club of New England, founded 1973

President's Message

It looks like another jam packed year for ASCNE. You'll find a full list of upcoming events at the end of this newsletter. Good luck in gathering your Finals points for Tennessee. I know my household is really looking forward to going in the Fall.

We are required by our bylaws to publish our membership list in the newsletter once per year. You'll find that we've met that obligation in this issue.

I thank the folks who allowed me to print their brags. I would really appreciate the opportunity to showcase a few more members. Please send your accomplishments and pictures to me at gpatails@aol.com. Send them immediately after the event and I'll save them for the next copy.

Please enjoy this issue of the 'New England Aussie'!

Art Landry



Stay up to date on ASCNE News!

Visit our website @

<http://www.ascne.org>

Like our Facebook page @

www.facebook.com/pages/ASCNE-Australian-Shepherd-Club-of-New-England

Subscribe to the ASCNE list @

<http://pets.groups.yahoo.com/group/ascne-l/>

(send an email to Dottie Duclos c/o

woodchip@meganet.net

asking for an invitation)

What's Inside:

Pages	2-6	March 1st Meeting Minutes
Page	7	Club Info
Page	8	Brags
Pages	9-13	ROM Results
Pages	14-16	Membership List
Pages	17-26	Event Fliers

General Membership Meeting Minutes of Sunday, March 1st, 2015

Log Cabin, Holyoke, MA – Carol Landry, Secretary

The meeting was called to order at 1:04 PM. Board members present: Arthur Landry, Gull Gullicksen, Kathie Chouinard, Carol Landry, Mike Kurdzo, Pauli Haggis & Kathy Buckley. Members present: Matt Mason, Jo-Ellen Voight, Carolyn Rancourt, Bill Haggis, Anne Hubbard, Pete Dolan, Dottie Duclos, Mary Ann Stoddard, Joe Stoddard, John Andrade, Kiana Andrade, Janelle Andrade, Lisa Andrade, Nancy Gagnon, Dan Thomsen, Audrey McKay, Wendy Richmond, Barbara Miller, Aline Hoadley, Jonathan Hoadley, Lee Prager, Linda, Prager, Ellen Kurdzo, Fred Bachelles, Judy Yvars, Manny Yvars, Susan Winters, Katalina Bravo, Cindy Fields, Elyse Phillips, Steven Phillips, Dianne Barrett, Hollis McGuire, Robin Goodman, Sue Schroeder, Jean Janotta, Lisa Haley, Madison Hey, Alexis Reidy, George Griffin, JoAann Griffin. Guests present: Lynne Ivaldi, Tim Fields, John Barrett, Lois Tucker.

Secretary's Report: A motion was made and passed to waive the reading of the minutes from January 4th.

Treasurer's Report: Kathie Chouinard presented the Treasurer's Report:

Balance last meeting: \$22,847.14 - corrected balance after bank statement \$23,557.64 (12/31 dues deposit)

Winter Blast Agility Trial- profit of \$1547.74

Winter Warmup Obedience/Rally Trial-profit of \$380.26

Deposits-dues-\$997.50

Misc. checks written: Lindsy \$59.40; Agility software \$100; Library \$60.

Facility Deposits: American K9-\$900; All Dogs Gym-\$500

March agility sanctioning: \$50

ROM Banquet: Toys \$160.68; engraving \$593.19 (1861 letters @ .30 letter)

Bank Balance as of 3/1/2015- \$24,647.38 (before bank statement)

Upcoming bills-ROM and Ribbons (all venues)

Motion to accept the Treasurer's Report was made by Robin Goodman and seconded by Wendy Richmond. The motion passed

Affiliate Report: Pauli Haggis presented the Affiliate Report:

MOTIONS PASSED BY THE ASCA BOD:

The following is a re-cap of changes to ASCA programs and operating procedures. While in depth explanation of the intricacies of each change is beyond the scope of this meeting, members who have an interest in any of these items are encouraged to check with ASCA BOD members, program committee members, and/or the ASCA website.

New England ASCA BOD members: Pete Dolan/Cindy King

AGILITY: local reps: Mike Kurdzo/Kathy Fretz

Placements in Gamblers shall be determined by total points for **Qualifying** runs first. If there are less than four qualifying runs, additional placements will be for the most points accumulated in non-qualifying runs.

There will be a change in the way fees for judges are calculated.

The Motion to discontinue the Veteran Handlers Division was ruled Out of Order

Course design will be modified to allow for extended integration in courses of certain obstacles: the double jump, tire, and closed tunnel.

STOCK DOG: local rep: Matt Mason

For Finals, there will be a change in how to calculate a tie breaker. This was necessary for the integration of courses D, E and F as Finals courses. A tie will be broken by calculating the total combined average score in all three go-rounds for the dog's ability to control livestock on the cross-drive through obstacle 2 in coursed A,B,C and Post Advanced, or to obstacle 3 in D, E and F

NATIONAL SPECIALTY HOST RULES/PREMIUM CHECKLIST:

When publishing the Specialty Premium in the Aussie Times, there is no fee to the Host club provided content and advertising are limited to 18 pages. Additional pages may be printed for free upon approval of the Business office.

MOTIONS BEFORE THE ASCA BOD FOR THEIR CONSIDERATION

AGILITY:

Trials would have the option of using only 1 jump bar per jump. This would now include the Novice Division, and would be an option, not a mandate.

A clarification of when to call an off-course: when a dog commits to an obstacle out of sequence or in the wrong direction the commitment point is when all 4 paws touch a contact obstacle or enter the tunnel, or when the dog passes the plane of the up-right of any jump, including the tire.

CONFORMATION: local rep: Peter Kontos/Lind Braun

The conformation committee would like to establish a communication channel through social media. It is proposed to establish a Face Book page entitled "ASCA CONFORMATION COMMITTEE DISCUSSION GROUP" to be owned by the Business Office Manager and moderated by 4 members of the Conformation Committee. It would be open to full ASCA members and ASCA Conformation Judges in good standing.

DNA: local rep: Linda Gray

The DNA committee wishes to communicate to the ASCA membership the need for extended markers to determine the parentage of closely bred dogs. This communication is to be published in the Aussie Times and on the ASCA website, there is a need to insure that members who have such dogs have access to the extended marker kit.

OBEDIENCE: local rep: Jane Small/Jayne Lips

There is a motion to remove the English Shepherd and the Pyrenean Shepherd from the list of breeds that can take an exemption to jump at 3/4 of their shoulder height.

In the Utility Division:

Moving stand and exam: to include that the judge shall not examine the dog's tail as well as the mouth and testicles;

Directed jumping scoring: when a handler needs to give an additional command to sit after the dog stops the fault would change from an NQ to a substantial deduction.

Directed Retrieve: the judge would assign the same glove and glove position to all dogs in the class. The assigned glove is to be posted 30 min prior to the beginning of the class. The judge can move the glove mid-class in the event that an unexpected condition develops ie: a change in lighting or distraction.

Note to Obedience Trial Chairs/Secretaries/Judges: There is a motion to limit the number of entries when one judge is assigned to judge multiple classes at a trial or multiple trials per day.

RALLY: local rep: Karen Sousa

There is a motion to combine START/HEEL/CONDUCT in one sign.

Changes are proposed in the wording of the performance description of signs to clarify proper execution of the tasks.

Changes in Premium and Sanctioning for Rally Trials are needed to make them consistent with those in other ASCA programs.

There is a proposal to include a chapter on course design and sign placement in the Rally rule book.

STOCK DOG: local rep: Matt Mason

A clarification is needed on when the lead can be removed. The dog must enter the arena on lead. The lead must be removed prior to beginning the run. Once the run begins the handler cannot hold the dog by its collar or body in an attempt to restrain it or guide it around the stock. The handler may touch the dog to check for injury or examine the feet for foreign bodies. At the end of the run, the dog must be back on lead before exiting the arena.

There are proposals to change the selection process for Stock Dog committee members.

A reorganization of the Stock Rule Book is needed to arrange the content in chronological order.

In the selections of Finals Judges, The Business office is to verify the qualifications of prospective judges in the judge's pool.

Library Report: Carolyn Rancourt- looking for ideas for additions to the collection

Newsletter Report: Art Landry stated that submission deadline for the next newsletter is March 15th.

BOD Report: Pete Dolan

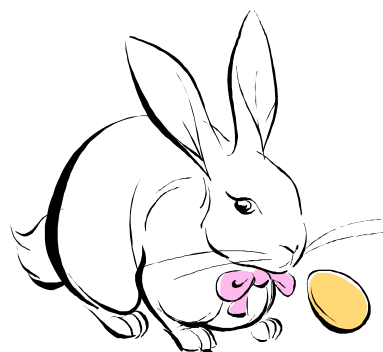
Sunshine Report: Fran Guerra has an unknown illness in family.

Event Updates:

Event Schedule 2015

- March 1 – ROM & ASCNE General Membership Meeting
 8 – Daylight Savings
 15 – ASCNE Winter Thaw ASCNE Conformation (Seekonk) – Susan Winters
 Premium is up – pre entries close March 9th
 Replaces Rescue Show
 15 – Newsletter Deadline
 28 & 29 – ASCNE Agility (All Dogs') –Jean Janotta
 John Raymond is judging
 Looking for chief ring stewards
- April 4 & 5 MAASC Agility – confirmed!
 5 – Easter
 11 & 12 - WASCUNY Agility @ High Goal Farm – confirmed!
 17 & 18 & 19 - ASCNE Obedience (MA) – day added, 2 rally & 3 obedience
 25 & 26 – HONYASC C/O/R
 26 – Intro to Herding (CT) – Tenley Dexter – confirmed!
 Flier is finished
- May 1 – Farm Trial (Sturbridge, MA) – *unlikely*
 2 & 3 – PEN-NY Agility – confirmed!
 2 & 3 – Arena Trials (Sturbridge, MA) – *unlikely*
 3 –May-Kin' It Happen ASCNE O/R (Goshen, CT) – Claudia Reed – confirmed!
 Flier is up on website
 9 – NYASA C/O
 9 & 10 – ASCNE Agility (East Winsor, CT) – new location & chairperson - Wendy Richmond – confirmed!
 Budget has been presented Diane Harrison judging
 10 – Mother's Day

- 23 & 24 – ASCNE Agility (NH) – Jean Janotta
 American K9-Mike Black (TX) is judging
 Looking for volunteers
- 25 – Memorial Day
- 30 & 31 – PEN-NY Agility – confirmed!
- June 6 & 7 – Colors of Summer (MA)
 Site reserved
 Agility & overall chairperson – Lee Prager
 Agility judge hired- Pamela Bryant weeks
 Obedience Chair- Dianne Barrett
 New Conformation Chairperson – Kelly Sweeney
- 20 & 21 WASCUNY Agility @ Sugarbush Farm – confirmed!
- 21 – Father's Day
- 28 – ASCNE Meeting (?)
- July 4 – July 4
 15 – Newsletter Deadline
 18 & 19 – WASCUNY C/R
- August 1 & 2 – ASCNE O/R (MA) Kathy Buckley, Chair
 7, 8 & 9 – HONYASC C/R/O
 8 & 9 - ASCNE Farm & Stock Trials (NH) – Matt Mason - confirmed
 Jim Hartnagle has been hired. 1 Farm Trial, 1 Arena Trial
 10, 11 & 12 – Possible herding clinic with Jim Hartnagle – Matt Mason
 15 & 16 – Act-Up ASCA Agility – confirmed RI
 15 & 16 - MAASC Agility – confirmed!
 22 & 23 – Farm Trials (Sturbridge) - tentative
- Sept 4, 5 & 6 PEN-NY A/C/R
 7 – Labor Day
 11-13 USDAA Trial
 15 – Newsletter Deadline
 19 & 20 – WASCUNY Agility??? *May cancel, WASCUNY is interested in hosting a 3rd day of Agility at Harvest Moon*
 ?? – Board Meeting
- Oct 3 & 4 PEN-NY O/R
10-17 Nationals in Tennessee **
 12 – Columbus Day
 24 & 25 – PEN-NY Agility??? *Thinking of cancelling?*
- Nov 1 – ASCNE General Membership Meeting @ Jean Janotta's
 7 & 8 – ASCNE O/R (?)



14 & 15 - ASCNE Agility (MA)

14 & 15 - MAASC Agility – confirmed!

15 Newsletter deadline

Dec 5 & 6 WASCUNY Agility

25 – Christmas

** Harvest Moon Mania has been cancelled for this year



A motion was made by Anne Hubbard and seconded by Ellen Kurdzo to accept all the Reports. Motion passed.

Old Business:

Open positions: ROM Banquet and meeting coordinator/ 2016 Course Director for HMM- Pauli Haggis made the point that the difficulty in getting a CD to step up was partly due to the enormous undertaking of the set up. We will explore options for facilitating. /Newsletter Editor

Computer and software update- Dianne Barrett. She is not finding anything out there that will help. Lee Prager made the motion to authorize Jean Janotta to spend up to \$1000 to buy a club computer and/or printer. Anne Hubbard seconded. Motion passed.

New Business:

No new membership applications.

Budget approval for May 9th & 10th agility trial in E. Windsor, CT. \$800 for venue, \$5675 in expenses, estimated profit \$2725. Mike Kurdzo made the motion to approve the budget. Pauli Haggis seconded. Budget approved.

President Art Landry presented his second annual President's Award to Pauli Haggis for her cool head and clear thinking that has helped the Board in making difficult decisions.

Robin Goodman announced that she has posted on the ASCNE site her "How to put on an obedience trial" manual.

Pete Dolan made the motion to adjourn. Audrey McKay seconded. Motion passed. Meeting Adjourned at 2:05 PM.

Respectfully submitted,

Carol Landry, Secretary



Carol Landry now has a new email address.

She can be reached at:

gldgandmeg@aol.com

President

Art Landry
603-783-4180
gpatails@aol.com

Vice President

Gull Gullickson
508-947-5606
gullr210@aol.com

Secretary

Carol Landry
603-783-4180
gpatails@aol.com

Treasurer

Kathie Chouinard
781-585-8125
katesaussies@comcast.net

Board Member

Mike Kurdzo
860-423-1004
mragility@yahoo.com

Board Member

Kathy Buckley
774-229-6658
pupmum@comcast.net

Membership Coordinator

Dottie Duclos
774-644-0693
woodchip@meganet.net

Newsletter Coordinator

Art Landry
603-783-4180
gpatails@aol.com

Webmaster

Robin Goodman
603-672-4092
rtgoodk9s@quantum-k9s.com

Agility Trial/Show Coordinator

Jean Janotta
603-895-5436
jjanotta@myfairpoint.net

Stockdog Trial/Show Coordinator

Carol Landry
603-783-4180
gidgandmeg@aol.com

**Conformation, Obedience & Rally
Trial and Show Coordinator**

Susan Winters
508-285-2847
FoxfireAS@aol.com

Agility Rom Coordinator

Susan Schroeder
agile_sue@yahoo.com

Obedience ROM Coordinator

Art Landry
gpatails@aol.com

Stock Dog ROM Coordinator

Peggy MacDonald
mmacdonald13@nyc.rr.com

Conformation ROM Coordinator

Karen Souza
halleymcgee11@gmail.com



Reimbursement Policy for Expenses Incurred on Behalf of ASCNE

Requests for reimbursement of expenses incurred on behalf of the club (whether for a trial, show, clinic, seminar, or whatever) must be submitted within 30 days of the event. Exceptions will be handled on an individual basis but the Treasurer must be notified before the 30-day limit is reached, - effective March 2006. (From the ASCNE Policy and Procedures Manual, available on the club web site)

BRAGS!



*Congratulations Denver
and the Prager Family!*

*Denver got his final Gamble Q
for his ATCH at the
ASCNE Winter Blast trial
On January 10, 2015
under judge Andrea Hoffman.*



Yeah!!!

**ATCH 4 Summit Dog
With Judi Schacte**

ASCNE RALLY ROM RESULTS 2014

RALLY

MASTERS B

HEARTHSIDE GRANDE ILLUSION	JANE SMALL	CHAMPION
FOXFIRES 4 STAR DREAMS COME TRUE	KATHLEEN BUCKLEY	RESERVE CHAMPION

MASTERS A

COSSACK HEMLOCKS NEXT LINK	STEVEN PHILLIPS	CHAMPION
PARADOX PARTY INVITATION	JENNIFER DARLINGTON	RESERVE CHAMPION

EXCELLENT C

none

EXCELLENT B

HEARTHSIDE GRANDE ILLUSION	JANE SMALL	CHAMPION
LAURICS GRAND SLAM	JO-ELLEN VOUGHT	RESERVE CHAMPION
FOXFIRES 4 STAR DREAMS COME TRUE	KATHLEEN BUCKLEY	RESERVE CHAMPION

EXCELLENT A

none

ADVANCED C

STONECIRCLE MOV N VIOLATION	ANNE ST. PIERRE	CHAMPION
ADORE'S HOW DO YOU LIKE ME NOW	CHRISTY HUGHES	RESERVE CHAMPION

ADVANCED B

CHECKERBERRY CATCH OF THE DAY	JENNIFER DARLINGTON	CHAMPION
HEMLOCKS GET UP AND GO	KATHLEEN BUCKLEY	RESERVE CHAMPION
CHECKERBERRY CRÈME DELICIOUS	JENNIFER DARLINGTON'	RESERVE CHAMPION

ADVANCED A

SILVERCHIP'S A WISH COME TRUE	DOROTHEA DUCLOS	CHAMPION
SAKONNET SUMMER BREEZE	PAUL BROWN	RESERVE CHAMPION

NOVICE C

STORMRIDGE TEE-A IS A FLYING	CLAUDIA REED	CHAMPION
STONECIRCLE MOV N VIOLATION	ANNE ST. PIERRE	RESERVE CHAMPION

NOVICE B

CHECKERBERRY CRÈME DELICIOUS	JENNIFER DARLINGTON'	CHAMPION
BUFFCAP HERE COMES THE SUN	LISA ANDRADE	RESERVE CHAMPION

NOVICE A

TOP CALIBER HANG M HIGH	PAULI HAGGIS	CHAMPION
-------------------------	--------------	----------



ASCNE OBEDIENCE ROM RESULTS 2014

OBEDIENCE

UTILITY B

STONECIRCLE MOV N VIOLATION	ANNE ST. PIERRE	CHAMPION
-----------------------------	-----------------	----------

UTILITY A

HEARTHSIDE GRANDE ILLUSION	JANE SMALL	CHAMPION
----------------------------	------------	----------

OPEN B

HEARTHSIDE GRANDE ILLUSION	JANE SMALL	CHAMPION
FOXFIRE 4 STAR DREAMS COME TRUE	KATHLEEN BUCKLEY	RESERVE CHAMPION

OPEN A

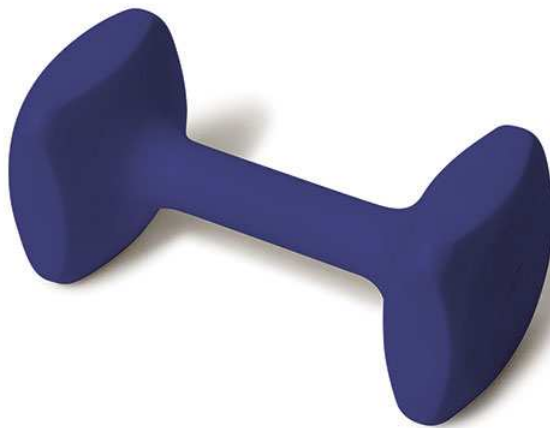
HAWK EYE WATCHING EWE	JANE SMALL	CHAMPION
QUANTUM QUAY FIRE OF STONEWALL	LYN SCRIBNER	RESERVE CHAMPION

NOVICE B

HEMLOCK'S GET UP AND GO	KATHLEEN BUCKLEY	CHAMPION
BAZZABEX PAVAROTTI	BARBARA BARREIRO	RESERVE CHAMPION

NOVICE A

RISINGSTAR'S FIRE 'N ICE	KAREN SOUZA	CHAMPION
--------------------------	-------------	----------



ROM Results Conformation

Puppy Dog

Harmony Hills Vice Versa Heather Braddock/Lori Schiard
Terra-Blue Red Diamond of Crystal Lakes Michael Sheehan

Puppy Bitch

Buff Cap Smoldering Rose Lisa, Jannelle, Kiara Andrade and Nancy Gagnon
Buff Cap A Rose At Dawn Nancy Gagnon

Junior Showmanship

1. Alexis Reidy
- 2..Aaron Dalke
3. Katakina Bravo
4. Janelle Andrade



Altered Class Dog Reserve	Buff Cap Here Comes The Sun Stone Circle Clear Sail N	Andrades Mary and Roy Lupien
Altered Class Bitch Tie for Class Reserve	Aliyah's Lookin 4 A Few Good Men Hearthside Grand Illusion SilverChip's A Wish Come True	Jennifer Richardson Jane Small, D. Duclos, K. Chouinard
Altered Winners Dog Reserve	Buff Cap Here Comes the Sun Stone Circle Clear Sail N	Andrades Mary and Roy Lupien
Altered Winners Bitch Reserve Tie for Reserve	Hearthside Grand Illusion Aliyah's Lookin 4 A Few Good Men Silverchips's A Wish Come True	Jane Small Jennifer Richardson D. Duclos, K. Chouinard
Altered Champion Dog No Reserve	Crofton Hawk Eye Watching Ewe	Jane Small, Linda Braun
Altered Champion Bitch No Reserve	Stonecircle Mov N Violation	Anne St, Pierre
Intact Class Dog Reserve	Checkerberry I Drive Your Truck Absoloot It Goes Like This	Jennifer Darlington Keli Gaunt
Intact Winners Dog Reserve	Checkerberry I Drive Your Truck Absoloot It Goes Like This	Jennifer Darlington Keli Gaunt
Intact Class Bitch Reserve	Chances R It Will Snow At Copperhill Absoloot Get Yourself A Koozie	Kathy Kellog Keli Gaunt
Intact Winners Bitch Reserve	Chances R It Will Snow Buff Cap Buttercup B' Dazzling	Kathy Kellog N. Gagnon, D. Thomsen
Champion Dog Reserve	Stormridge's Bag of Chips Kinnebrooks Safe At Home	Kelly Sweeny Antonia Lake
Champion Bitch Reserve	Stormridge's Central Park Harmony Hill's Legally Blonde	Aaron Dalke A. Lake, H. Braddock

CATTLE

ADVANCED

Makin'8 Just a Dream	Tenley Dexter	Champion
Riverbank's Right Hand Man	Matt Mason	Reserve

OPEN

Riverbank's Aysa Mason	Matt Mason	Champion
Riverbank's Right Hand Man	Matt Mason	Reserve

STARTED

Ventura Ulterior Motives	Kathy Peloquin	Champion (tie)
--------------------------	----------------	----------------

Harmony Hill Night Moves at Ventu-	Kathy Peloquin	Champion (tie)
Oakcreek Bulleit	Denise Bonyon	Champion (tie)
Rockin' C Half Hitch	Beth Adams	Reserve

FARM TRIAL CATTLE

ADVANCED

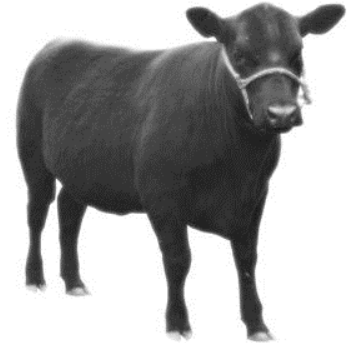
Rockin'C Pickup Man	Diane Menard	Champion
Finley's Double Dog Dare You	Diane Menard	Reserve

OPEN

Rockin'C Pickup Man	Diane Menard	Champion
Finley's Double Dog Dare You	Diane Menard	Reserve

ROM Results

Stock



SHEEP

ADVANCED

Makin'8 Just a Dream	Tenley Dexter	Champion
Brookwood's Shenanigans	Art Landry	Reserve

OPEN

Propwash Flying Stop	Janet Benson	Champion (tie)
Riverbank's Right Hand Man	Matt Mason	Champion (tie)
Caitland from Out of the Blue	Anne Hubbard	Reserve

STARTED

Harmony Hill Night Moves at Ventura	Kathy Peloquin	Champion
Ventura Ulterior Motives	Kathy Peloquin	Reserve

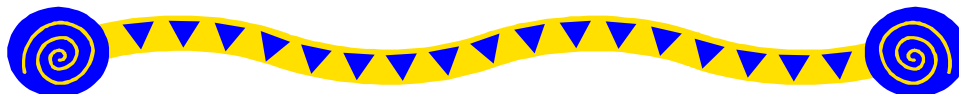
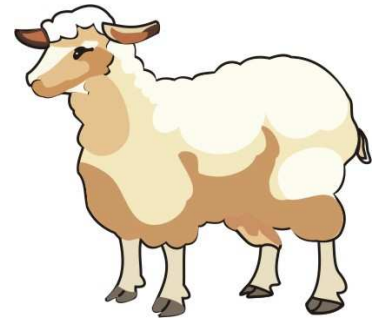
FARM TRIAL

ADVANCED

Finley's Double Dog Dare You	Diane Menard	Champion
W Lazy J Brookwood Gidget	Carol Landry	Reserve

OPEN

Rising Sun's Real Good Thing	Jim Jayco	Champion
Brookwood's Meg'N Waves	Carol Landry	Reserve



DUCKS

ADVANCED

Makin'8 Just a Dream	Tenley Dexter	Champion
Brookwood's Shenanigans	Art Landry	Reserve

OPEN

Rockin C Half Hitch	Beth Adams	Champion
Max Bowie	Kelly Bowie	Reserve

STARTED

Oakcreek Bulliet	Denise Bonyun	Champion
Harmony Hill Night Moves at Ventura	Kathy Peloquin	Reserve

FARM TRIAL

ADVANCED

Top Caliber Hang M High	Pauli Haggis	Champion
W Lazy J Brookwood Gidget	Carol Landry	Reserve

OPEN

Top Caliber Hang M High	Pauli Haggis	Champion
Foxfire's 4 Star Dreams Come True	Kathy Buckley	Reserve

ROM Results

Stock



FARM TRIAL MIXED STOCK

ADVANCED

Top Caliber Hang M High	Pauline Haggis	Champion
-------------------------	----------------	----------

OPEN

Finley's Double Dog Dare You	Diane Menard	Champion
Gefion's Time Will Tell	Natalie Cohen	Reserve

ROM Meeting
and
Banquet
Log Cabin
Restaurant
March 1, 2015



New England Aussie – March 2015

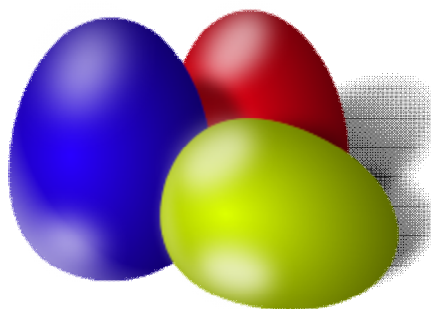
AUSTRALIAN SHEPHERD CLUB OF NEW ENGLAND				
MEMBERSHIP LIST 2015				
Name	JR		TEL. NO.	E. MAIL
Adamczyk, Deborah		410 Old West Brookfield Rd, Warren, MA 01083-0051	413-436-5618	djadamczyk@comcast.net
Adamczyk, Joseph		410 Old West Brookfield Rd., Warren, MA 01083-0051	413-436-5618	
Adams, Beth		86 Winnicutt Rd, Stratham, NH 03885	603-502-8565	bethadam@comcast.net
Adasiewicz, Emmy		106 Althea St., West Springfield, MA 01089	413-374-9074	Terrablue@peoplepc.com
Altergott, Terri A.		9 Hollis St., Uxbridge, MA 01569-1939	508-278-7774	SBSNevents@aol.com
Anderson, Sandy		89 Stoney Lane, N. Kingstown, RI. 02852	401-265-0069	sanderson@colemanrealtors.com
Andrade, John		10 Cortland Place, Taunton, MA. 02780	508-880-7477	
Andrade, Lisa		10 Cortland Place, Taunton, MA. 02780	508-880-7477	Lis_And@msn.com
Andrade, Janelle	JR	10 Cortland Place, Taunton, MA. 02780	508-880-7477	
Andrade, Kiara	JR	10 Cortland Place, Taunton, MA. 02780	508-880-7477	
Donovan, Teresa (Andrews)		280 Bromley Rd., Huntington, MA 01050	413-667-8725	TerrAndrews@aol.com
Andrus, Paula		123 Sam Butler Rd., Batesburg, SC 29006-8167	508-380-8889	spotoutback245@gmail.com
Angueira, Annie		540 Pine Cable Rd., Williamstown, MA 01267	518-256-7561	annie.angueira@yahoo.com
Bachelle, Frederick		206 Pleasant Valley Rd., So. Windsor, CT 06074-3316	860-528-8027	bachelle@cox.net
Bachelle, Karen Ann		206 Pleasant Valley Rd., So. Windsor, CT 06074-3316	860-528-8027	bachelle@cox.net
Barden, Linda		119 River Rd., Agawam, MA 01001-2813	413-427-3766	agilesalsa@yahoo.com
Barreiro, Barbara		258 Forest St., Sanbornville, NH 03872	603-522-8912	b.barreiro@roadrunner.com
Barrett, Dianne		336 E. Putnam Rd., Putnam, CT 06260-2607	860-753-2024	dianne.barrett@att.net
Bell, Courtney		11 Burdean Rd., Windham, ME 04062	757-650-0041	equinoxaussies@aol.com
Benson, Janet		33 Oliver Rd., Lebanon, CT 06249	860-642-6185	janet.starshinefarm@outlook.com
Benson, Kenneth		33 Oliver Rd. Lebanon, CT 06249	860-642-6185	
Bishop, Kathrine		58 Sleepy Hollow Rd., No. Stonington, CT 06359	860-535-3947	Katb1@comcast.net
Bloch, Nini		123 Page Rd., Bedford, MA 01730	781-275-3415	ninibloch@verizon.net
Blume, Honor		P O Box 107, Sheffield, MA 01257	413-446-7147	aussiemom01257@yahoo.com
Bolduc, Carol		32 Stone Rd., Shelburne Falls, MA 01370	413-834-1576	cmbolduc@comcast.net
Booth, Cynthia		40 Mansion St., Bellingham, MA 02019-2039	508-883-0476	Cynthia_Booth@comcast.net
Bowie, Kelly		1472 S. Schodack Rd., Castleton, NY 12033	518-321-9679	kellybowie@gmail.com
Bonyon, Denise		1183 So. Hollow Rd., Stowe, VT 056772	802-734-4313	denise@bonyun.com
Braddock, Heather		174 Harmony Hill Rd., Harwinton, CT 06791	860-485-0433	heather@harmonyhillaussies.com
Bravo, Katalina	JR	53 Sachem St., Pawtucket, RI 02861	401-309-8414	katalinadhabest@yahoo.com
Brown, Harald R.		19 Webster St., Allenstown, NH 03275	603-485-3845	ChaHarKennel@aol.com
Brown, Paul E.		108 East Main Rd., Middletown, RI 02842-4912	401-846-3413	QVMRRRC@MSN.COM
Brown, Stephanie		13 A Baker St., Dover, NH 03820	603-289-3211	ChaHarKennel@aol.com
Bryan, Kelsey	JR	20 Capen Hill Rd., Sharon, MA 02067	781-784-2366	Cowboy1ml@gmail.com
Buckley, Kathleen		216 Brook St., Rehoboth, MA. 02769	774-229-6658	pupmum@comcast.net
Butterworth Linda		649 2nd NH Turnpike, Unity, NH 03743	603-543-9568	Misfitacres7@yahoo.com
Campbell, Alicia		353 Platt Hill Rd., Winsted, CT 06098	860-309-4405	moonstone6295@yahoo.com
Campbell, Laura		213 Buck St., Pembroke, NH 03275	603-340-1006	LMCampbell22@gmail.com
Campbell, Morgan	JR	353 Platt Hill Rd., Winsted, CT 06098	860-309-4405	moonstone6295@yahoo.com
Carlson, Christine		61 Clinton Ave., Budd Lake, NJ 07828	973-691-2955	katerpoo@aol.com
Carver, Kim (Montague)		41 Old County Rd., So. Hadley, MA 01075	508-864-9339	kdmontag@gmail.com
Ceberek, Connie		14 Batt St., Middletown, CT 06457	860-346-2870	naturefans@aol.com
Ceberek, Jackie		14 Batt St., Middletown, CT 06457	860-346-2870	naturefans@aol.com
Chase, Jen		14 Sanborn Way, Brentwood, NH 03833	603-679-3384	skipjen@comcast.net
Chouinard, Kathleen		37 Spring St., Plympton, MA 02367-1701	781-585-8125	katesaussies@comcast.net
Cohen, Natalie		36 Broad Brook Rd., Ellington, CT 06029	860-819-8339	natslittiebit@yahoo.com
Collins, Terri K		81 West St., Auburn, MA 01501-1014	508-832-9394	TKcollinsk9@gmail.com
Concannon, Sharon		111 Abbott Ave, Leominster, MA 01453	978-660-3213	slconcann@gmail.com
Cowles, Bud		26 Fletcher Rd., Enfield, CT 06082	860-763-4503	BudCowles@cox.net
Cowles, Marilyn		26 Fletcher Rd., Enfield, CT 06082	860-763-4503	MarCowles@cox.net
Crabtree, Elizabeth		57 Backpasture Lane, Hope, ME 04847	207-785-6398	backpast@tidewater.net
Crabtree, Richard		57 Backpasture Lane, Hope, ME 04847	207-785-6398	backpast@tidewater.net
Dalke, Aaron	JR	195 West St., Goshen, CT. 06756	860-491-1128	
Darlington, Denise		2 Lane Ln., Ashburnham, MA 01430	978-827-6904	Joonbug@aol.com
Darlington, Jennifer		2 Lane Ln., Ashburnham, MA 01430	978-827-6904	jen@checkerberryaussies.com
Davis, Jessica		60 Depot St., Andover, NH. 03216	603-244-9434	nhaussiemom@yahoo.com
Dean, Donald		29 Pickens St., Lakeville, MA 02347	774-213-5588	silvercityaussie@comcast.net
Desjardins, Tracy		PO BOX 245, Canterbury CT 06331	860-917-8347	desjardinsaussies@sbcglobal.net
Dexter, Tenley		P.O. Box 58, Gaylordsville, CT 06755	860-354-9069	ten11ey@yahoo.com
Dolan, Peter		80 Reutemann Rd., No. Stonington, CT 06359	860-535-1159	PDolanNuke@comcast.net
Dreyer, Wendy		27 Dunbar Rd., Quaker Hill, CT 06375	860-444-2849	arboaussie@yahoo.com
Duarte, Deborah		87 Old Kent Rd. North, Tolland, CT 06084	860-729-1793	Ditduarte1@comcast.net
Duclos, Dottie		P.O. Box 896, Assonet, MA 02702	508-644-2409	woodchip@meganet.net
Durfee, Peter		45 Deerfield Dr., No. Scituate, RI 02857	401-647-5225	Sleptl8@cox.net
Durfee, Sheila		45 Deerfield Dr., No. Scituate, RI 02857	401-647-5225	Sleptl8@cox.net
Fields, Cynthia A.		522 Clubhouse Rd., Lebanon, CT 06249	860-334-5439	fieldstone522@yahoo.com
Force, Michelle		49 Richards Rd., Fairfax, VT 05454	802-849-0409	discoforce@yahoo.com
Foss, Kristie		92 Kendall Rd., Lisbon, CT 06351	860-861-2015	kyfoss@comcast.net
Frank, Leslie		Propwash Farm, 21 Cottage Rd., Kensington, NH 03833	603-772-4635	propwashfarm@comcast.net
Freitag, Carla		9 Ross Dr., Yorktown Heights, NY 10598	914-299-0606	carla.f@goldenbridgefinancial.com
Fretz, Katherine		37 Maxham Rd., Woodstock, VT 05091	802-738-6888	sunpiperaussies@gmail.com
Gagnon, Nancy		137 Stafford St, Stafford Springs, CT 06076	860-684-6934	buff_cap@msn.com

New England Aussie – March 2015

Gaunt, Keli		148 Turnbull Rd, New Hartford, CT 06057	860-480-6809	Absolootaussies@aol.com
Geiger, Kelen		28 Spruce Ave., Rindge, NH 03461	603-899-5600	little56dog@yahoo.com
Gondek, Donna		36 Hitching Post Lane, Glastonbury, CT 06033	860-633-3562	agilitydog@snet.net
Goodman, Robin T.		648 Mason Rd., Milford, NH 03055	603-672-4092	rtgoodk9s@quantum-K9s.com
Grace, Laurie		62 Fairview Terrace, So. Glastonbury, CT 06073-3303	860-659-0748	laurie.grace@gmail.com
Gray, Linda		68 Bourne Ave., Tiverton, RI 02878	401-625-5926	lmgray@cox.net
Grenon, Richard		82 Ridgewood Dr., Brewster, MA 02631	508-896-4624	Marineraussies@comcast.net
Griffin, George		151 Perry St., Douglas, MA 01516	508-476-3677	scidata@charter.net
Griffin, JoAnn		151 Perry St., Douglas, MA 01516	508-476-3677	jogrif7@charter.net
Grossman, Emily		17 Brastow Dr., Medfield, MA 02052	508-314-6714	cloveraussies@gmail.com
Groves, Maryann		PO Box 472, Alfred, ME 04002	207-490-3612	cmgroves@roadrunner.com
Guerra, Francine		48 Cross St., Ludlow, MA 01056	413-949-3264	quefra68@gmail.com
Gura, Roxanne		42 Westbrook Rd., Plantsville, CT 06479	860-621-8029	rmchatten@sbcglobal.net
Gullicksen, Gull		210 Cherry St., Middleboro, MA 02346	508-947-5606	gullr210@juno.com
Haggis, Pauline		172 Hartford Rd., Brooklyn, CT 06234	860-774-8668	whaggis@snet.net
Haggis, William		172 Hartford Rd., Brooklyn, CT 06234	860-774-8662	whaggis@snet.net
Haley, James		106 Quaker Hwy., Uxbridge, MA 01569	508-277-4416	haleyjm71463@yahoo.com
Haley, Lisa		106 Quaker Hwy., Uxbridge, MA 01569	508-277-4416	haleyjm71463@yahoo.com
Hamlyn, Bob		131 Hassan Ave, Newcastle, ME 04553	207-586-5110	BJASKT@yahoo.com
Hamlyn, Debi		131 Hassan Ave, Newcastle, ME 04553	207-586-5110	BJASKT@yahoo.com
Hakala, Donna L.		1415 Little River Campground Rd., Pisgah Forest, NC 28768	828-877-9922	cadenceccc@hotmail.com
Heath, Linda		304 Chichester Rd., Loudon, NH 03307	603-848-7149	bordertaussie@gmail.com
Hefner, Kathleen		43 Burgin Pkwy., Quincy, MA 02169	617-479-3080	aussiedogs@comcast.net
Hey, Madison	JR	106 Quaker Hwy., Uxbridge, MA 01569	508-277-4416	
Hicks, Sandy Jean		36 Goodrich Ave., Warwick, RI 02886	401-738-4965	Hickssi@verizon.net
Higgins, Kevin		20 Crescent St., Winsted, CT 06098	860-738-1195	kymandkevin11@yahoo.com
Higgins, Kym		20 Crescent St., Winsted, CT 06098	860-738-1195	kymandkevin11@yahoo.com
Hinckley, Howard		295 Regency Dr., Marston's Mills, MA. 02648	508-360-0185	
Hoadley, Aline		26 North Gate Drive, Harwinton, CT 06791-1928	860-485-2639	ownedbyaussies@charter.net
Hoadley, Jonathan		26 North Gate Drive, Harwinton, CT 06791-1928	860-485-2639	ownedbyaussies@charter.net
Hopkins, Anne Marie		259 Plymouth St., Halifax, MA 02338	781-844-5084	annemhopkins@gmail.com
Hopkins, Keith		259 Plymouth St., Halifax, MA 02338	781-844-5084	
Hubbard, Anne		177 Trintown Rd., N Scituate, RI 02857	401-647-5751	rizntupshine@cox.net
Hubbard, Morgan		32 School St., Windsor Locks, CT 06096	860-986-2340	morgan.hubbard@hotmail.com
Hughes, Chrissy		103 Woodhaven Rd., Woonsocket, RI 02895	401-523-6027	christy413@msn.com
Jakubowski, Edward		613 Norwich Rd., Salem, CT 06420-3729	860-859-0103	fribdogger@comcast.net
Jakubowski, Valerie		254 Chestnut Hill Rd., Colchester, CT 06415	860-537-3398	valeriejak@AOL.COM
Janotta, Jean M.		24 Country View Dr., Raymond, NH 03077	603-895-5436	janotta@myfairpoint.net
Jayko, James M.		56 Cobbleview Rd., Williamstown, MA 01267	413-458-3315	jjjayko@mycid.com
Johnson, Andy		P O Box 803, Epping, NH 03042	603-679-6744	Northriver383@gmail.com
Johnson, Diane		P O Box 803, Epping, NH 03042	603-679-6744	Northriver383@gmail.com
Johnson, Donna		45 Briar Hill Rd, Norwich, Ct. 06360	860-889-8654	dji1950@sbcglobal.net
Jones, Karyn		18 Old Town Rd., West Dover, VT 05356	802-464-6240	RSJ25@together.net
Jones, Richard		18 Old Town Rd., West Dover, VT 05356	802-464-6240	RSJ25@together.net
Karras, Jillayne		17 Concord Dr., Irwin, PA 15642	774-212-3361	jillaynekaras@gmail.com
Keach-Tomes, Debbie		122 Broad St., Pascoag, RI 02859-2612	401-323-0452	Aussie0397@cox.net
Keiser, Lincoln		291 Long Hill Rd., Middletown, CT 06457	860-347-1796	lkeiser@wesleyan.edu
Kellogg, Kathy (Hubbard)		567 South Lane, Granville, MA 01034	860-559-4305	copper.hill@comcast.net
Killam, Donna		4028 Williams St., Fruitland Park, FL 34731	617-688-2340	Dressage.paint@gmail.com
King, Cynthia		18 Riverview Drive, Canterbury, CT 06331	860-546-6367	cking1299@cs.com
King, Loretta J		236 Brook St., Plympton MA 02367	781-585-4051	lorettaking83@yahoo.com
King, Sally S.		168 Day St., Granby, CT 06035	860-653-4239	suzydrummer@cox.net
Pechka-King, William		142 Drown Rd., Pomfret Center, CT 06259	860-974-1201	
Kontos, Peter G.		2658 Woods Ave., Oceanside, NY 11572-1218	516-417-0227	RNNR70@aol.com
Kurdzo, Ellen		113 Boston Hill Rd., Andover CT 06232	860-742-7651	zippydo@comcast.net
Kurdzo, Michael		113 Boston Hill Rd., Andover CT 06232	860-742-7651	mragility@yahoo.com
Lake, Antonia P.		494 Kinne Brook Rd. Worthington, MA 01098	413-238-5398	APLPOND@AOL.COM
Landry, Arthur		368 Northwest Rd., Canterbury, NH 03224	603-783-4180	GPATAILS@AOL.COM
Landry, Carol		368 Northwest Rd., Canterbury, NH 03224	603-783-4180	GPATAILS@AOL.COM
Johanson, Amy	JR	12 Charlesdale Rd., Medfield, MA 02052		
Landry, James		12 Charlesdale Rd., Medfield, MA 02052	508-359-5220	vinelake@aol.com
Landry, Sandra		12 Charlesdale Rd., Medfield, MA 02052	508-359-5220	vinelake@aol.com
Liberty, Michael J.		24 Willow St., Norwood, MA 02062	781-831-2606	milib143@aol.com
Liberty, Priscilla		24 Willow St., Norwood, MA 02062	781-831-2606	
Liebenow, Laura		278 Barton Rd., Greenfield, MA 01301	413-824-8103	laura.liebe@comcast.net
Lupien, Mary		2965 Washington Rd., Waldoboro, ME 04572	207-380-4645	mlupien13@gmail.com
Lupien, Roy		2965 Washington Rd., Waldoboro, ME 04572	207-380-4645	
MacDonald, Margaret R		1161 York Ave, Apt 12F, New York, NY 10065	646-649-5704	mmacdonald13@nyc.rr.com
MacEachern, Scot		20 Ticonderoga Lane, Millis, MA 02054	508-376-5878	
Madsen, Eric		41574 Bedford Dr., Canton, MI 48187	734-576-3777	ericmadsen@juno.com
Marks, Jennifer		74 Newton St., Middletown, CT 06457	860-878-0468	AgilityAussie07@yahoo.com
Marshall, Diane		70 Spring St., Wrentham, MA 02093	508-883-1150	Dianefmarshall@comcast.net
Mason, Joanne		93 Highland St., Middleboro, MA 02346	508-947-5101	joeymason@comcast.net
Mason, Dr. Matthew C.		557 W Salisbury Rd., Salisbury, NH 03268	603-648-2973	masonpr@tds.net
McCormick, Dianne		235 Pine Orchard Rd., Chepachet, RI 02814	401-636-1488	D.McCormick.crowshill@gmail.com
McCormick, Donald		235 Pine Orchard Rd., Chepachet, RI 02814	401-636-1488	
McGuire, Hollis		648 Mason Rd., Milford, NH 03055	603-672-4092	hollis@quantum-K9s.com

New England Aussie – March 2015

McKay, Audrey		17 Brinsmade Lane, Sherman, CT 06784-1434	860-355-1758	sherzooman@aol.com
Menard, Diane		39 Allen Rd., Sturbridge, MA 01566	508-615-3668	blackbirch.farm@yahoo.com
Menches, Katherine	JR	48 Cross St., Ludlow, MA 01056	413-949-3264	
Menches, Lily	JR	48 Cross St., Ludlow, MA 01056	413-949-3264	
Miller, Barbara		232 New Rd., Avon, CT 06001	860-693-4807	BarbaraG.Miller@hotmail.com
Miller, Karen		82 Ridgewood Dr., Brewster, MA 02631	508-896-4624	Marinaaussies@comcast.net
Montague, Kimberly		38 Washington Ave., So. Hadley, MA 01076	508-864-9339	kdmontag@gmail.com
Mulligan, Robin		123 Hawley St., Northampton, MA 01060	413-588-2681	pinnacleaussies@copper.net
Nannery, James S.		P.O. Box 44, Sudbury, MA 01776	508-481-0694	jnannery@fastenerz.com
Nannery, Mary A.		P.O. Box 44, Sudbury, MA 01776	508-481-0694	manannery@fastenerz.com
Neri, Carrie		65 Music Vale Rd., Salem, CT 06420	860-887-7227	carrie.j.neri@pfizer.com
Nicolazzo, Kathleen J.		408 Silver St., Rollinsford, NH 03869	603-674-6648	scottishgrowl@comcast.net
Niece, Patricia A.		810 North Farms Rd., Wallingford, CT 06492	203-265-9584	waggintrailsas@aol.com
Niland, Diane		260 Cornatzer Rd., Mocksville, NC 27028	336-940-5121	dianeniland@roadrunner.com
Noll, William (L. Barden)	JR	11 Federal St., Belchertown, MA 01007	413-427-3766	
Oetting, Cheryl		3 Woodland Rd., Bedford, MA 01730	339-227-0907	cheryloetting@yahoo.com
Parker Pamela		73 Shamrock Lane, Damariscotta, ME 04543	207-563-1443	sailportunus@gmail.com
Peloquin, Kathy		295 Regency Dr., Marstons Mills, MA. 02648	508-360-0185	ventura.aussies@gmail.com
Phillips, Elyse		10 Red Coach Dr., Coventry, RI 02816	401-397-7450	justel444@verizon.net
Phillips, Steven		10 Red Coach Dr., Coventry, RI 02816	401-397-7450	
Prager, Lee		110 Coburn Rd., Berlin, MA. 01503	978-838-9950	
Prager, Linda		110 Coburn Rd., Berlin, MA. 01503	978-838-9950	lprager@charter.net
Prouty, Robin		1096 Barre Rd., Gilbertville, MA 01031	413-477-8221	cranaussie@aol.com
Raphael, Janice		1062 Westgate St., New Bedford, MA 02745	508-995-1751	Jan621@comcast.net
Reed, Claudia C.		11 Silano Dr., Harwinton, CT 06791	860-485-1426	creedobagaussies@sbcglobal.net
Reidy, Alexis	JR	30 Anderson St., Middleboro, MA 02346	508-725-1711	chalupa0706@yahoo.com
Rencourt, Carolyn (MacDonald)		606 Hodges St., Taunton, MA 02780	508-241-4826	carolyn@wetnosespa.com
Richardson, Jennifer		2 Weetamoe Way, Westford, MA 01886	978-407-7286	jwerner511@yahoo.com
Richardson, William		2 Weetamoe Way, Westford, MA 01886	978-407-7286	
Richmond, Wendy L		8 Heathcote Lane, Amenia, NY 12501-5176	845-389-6123	aussiedogs@optonline.net
Rogers, Suzanne M		84 Wapping Wood Rd., Ellington CT 06029	860-967-7548	celticwind@comcast.net
Ruppel, Sharon		71 North Shore Rd., Voluntown, CT 06384	860-376-5951	hemlocksauassies@sbcglobal.net
Scarpa, Michele		27 Edgewood Dr., Beacon Falls, CT 06403	203-729-2452	aussenrott@sbcglobal.net
Schroeder, Sue		16 Breckenridge, Hadley, MA. 01035	413-587-3357	agile_sue@yahoo.com
Schachte, Judith		18 Karabelle Lane, Rhinebeck, NY 12572	845-876-3646	jschachte@frontiernet.net
Schachte, Hank		18 Karabelle Lane, Rhinebeck, NY 12572	845-876-3648	
Scribner, Lyn		33 Four Rod Rd., Rochester, NH 03867	603-332-1098	pawsitivehealth@aol.com
Sheehan, Michael C.		810 North Farms Rd., Wallingford, CT 06492	203-265-9584	waggintrailsauassies@gmail.com
Slatery, Margo		81B Portland Ave., Dover, NH 03820	603-866-6215	aussphph@hotmail.com
Small, Jane		20 Ticonderoga Lane, Millis, MA 02054	508-376-5878	ianesmalldog@aol.com
Smith, Alison		250 Southampton Rd., Westhampton, MA 01027	413-527-3652	thegrinningdog@me.com
Souza, Karen L.		60 Melrose St., Fall River, MA 02723-4116	508-642-3967	halleymcgee11@gmail.com
St. Louis, Sue		72 Hayes Rd., Madbury, NH 03823	603-743-4550	sstlouis@comcast.net
St. Pierre, Anne M.		204 Falmouth Rd, Windham, ME 04062	207-653-7730	stpierrean@gmail.com
Stoddart, Joseph		52 Eastern Ave., S. Deerfield, MA 01373	413-665-3510	lukebrewkori@yahoo.com
Stoddart, Mary Ann		52 Eastern Ave., S. Deerfield, MA 01373	413-665-3510	korbrew@yahoo.com
Suter, Jesse		49 Richards Rd., Fairfax, VT 05454	802-849-0409	discoforce@yahoo.com
Sweeney, Kelly		195 West St., Goshen, CT. 06756	860-491-1128	bluedogs123@gmail.com
Swanson, Fran		1802 Hatch School Rd., Brattleboro, VT 05301	802-368-2429	franziny@sover.net
Thomsen, Daniel		54 Maple St., Acton, MA 01720	978-828-0593	dan.thomsen@me.com
Viles, Kate		PO Box 134, North Hartland, VT 05052	802-356-7453	sunnyacresfarmvt@gmail.com
Vought, Jo-Ellen		391 Center St., Raynham, MA 02767	508-245-1463	jevought2@comcast.net
Welch, Marcia		P.O. Box 90, Edgecomb, ME 04556	207-522-6001	dogspeak@midcoast.com
Whitlock, Lelia C.		17 Sterling Rd., Waltham, MA 02451	781-647-1649	aussiesx2000@yahoo.com
Wildhagen, Phil		224 Sweeney Rd., Lompoc, CA 93436		
Wilkinson, Sheryl		26 Dave Snow Rd., New Gloucester, ME 04260	207-926-4274	crf@maine.rr.com
Williamson, Diana		2 Chester Ave., Westerly, RI 02891	401-596-7246	darciegirl@cox.net
Winters, Susan		5 Patlena Dr., Norton, MA 02766	508-285-2847	FoxfireAS@aol.com
Witham, Dennis		221 Cushman Rd., Winslow, ME 04901	207-314-1352	dwnwitham@roadrunner.com
Yarmac, John C. III		P.O. Box 81, Shelburne Falls, MA 01370-0081	413-625-9318	cam1027ray@hotmail.com
Yvars, Judy		854 West St., Pittsfield, MA 01201	413-442-6249	bonapart@verizon.net
Yvars, Manny		854 West St., Pittsfield, MA 01201	413-442-6249	bonapart@verizon.net





ASCNE Presents **Rally & Obedience**

April 17 - 19, 2015

Canine Mastery

Seekonk, MA

No flexi-leads allowed in the building

1 All-Breed Rally trial Friday

1 All-Breed Rally trial & 1 Obedience trial Saturday

2 All-Breed Obedience trials Sunday

Show will be indoors with matting *- Building Opens at 7:30 on Saturday and Sunday



Judging Schedule

Rally	Friday 5:30 PM PM Trial - Entries taken 4:30 to 5:00 PM	Jayne Lips, Bushkill, PA	Classes: Masters, Excellent, Advanced, Novice //Levels: A,B,C
Rally	Saturday 8:30 AM AM Trial - Entries taken 7:30-8:00	Jayne Lips, Bushkill, PA	Classes: Masters, Excellent, Advanced, Novice //Levels: A,B,C
Obedience	Saturday 12:30 PM PM Trial - Entries taken 11:30-12:00 trial starts at 12:30 or 1/2 hour after the AM trial ends, if it runs later than noon	Maria "Terry" Papineau	Classes: Regular - Utility, Open, ODX - levels A,B // Novice, Beginner Novice - Levels A,B Non-regular - Wild-card and Sub-Novice
Obedience	Sunday 8:30 AM AM Trial - Entries taken 7:30 - 8:00, Trial starts at 8:30	Jayne Lips, Bushkill, PA	Classes: Regular - Utility, Open, ODX - levels A,B // Novice, Beginner Novice - Levels A,B Non-regular - Wild-card and Sub-Novice
Obedience	Sunday 12:30 PM PM Trial - Entries taken 11:30 - 12:00 trial starts at 12:30 or 1/2 hour after the AM trial ends, if it runs later than noon	Maria "Terry" Papineau	Classes: Regular - Utility, Open, ODX - levels A,B // Novice, Beginner Novice - Levels A,B Non-regular - Wild-card and Sub-Novice

Entries

Pre-entries: \$18 for Regular \$14 for Non-Regular classes

Opens March 15 and **Closes** April 12

Day of show entries: will also be accepted at \$20.00 for Regular \$15.00 for Non-Regular classes.

Mail to:

ASCNE SHOW
c/o Canine Mastery
102 A Pond St
Seekonk, MA 02771

Registration & Tracking

All Australian Shepherds over the age of 6 months must be registered. *Effective January 1, 2004:* All dogs six (6) months and older must have an individual ASCA registration or LEP number or and ASCA tracking number to compete in ASCA sanctioned Obedience Trials. A dog will be allowed to be shown at the trial where the handler applies for an ASCA tracking number. The handler will be issued a receipt by the Registration table valid for sixty (60) days to allow the Business Office time to issue the tracking number. Photo copies or originals of registration or tracking number papers must be presented to the Registration Table upon request when entering ASCA sanctioned Obedience Trials. Please visit www.asca.org for information and forms.

**Emergency
Vet Care**

Bay State Veterinary Emergency Services 76 Baptist Street Swansea, MA 02777 (508) 379-1233

Lodging

Accommodations That Accept Well Behaved Dogs, please confirm when calling

SOME MOTEL COURTESIES TO OBSERVE:

- Cover the motel's bedding with a sheet, whether or not you think your dog will get on the bed.
- If you crate your dog, please bring a towel to put under the crate to keep marks off the rug. Bring a towel to put under your dog's food dish.
- Make every effort to have your dog free of fleas BEFORE arriving.
- All poop must be picked up, bagged, and disposed of properly by the dog's handler. The Event Committee will excuse competitors who fail to pick up after their dogs at the test site or the motel.
- Don't leave your dog unattended. If you must leave, take them with you.

Motel 6, 821 Fall River Ave, Seekonk, MA (508) 336-7800 – 10 minutes from show site

Ramada Inn, 940 Fall River Avenue, Seekonk, MA (508) 336-7300 – 10 minutes from site

Extended Stay, 1000 Warren Ave. East Providence, RI 02914

Red Roof Inn, Mansfield, MA, (508) 339-2323 25 minutes from show site

Holiday Inn, Mansfield, MA (508) 339-2200 25 min from show site

Arns Motor Lodge, N. Attleboro, MA, (508) 695-5102 15 minutes from show site

Normandy Campground, Foxboro, MA, (508) 543-7600 20 minutes from show site

**On-Site
Camping**

On site camping is available for self-contained units only. No electricity is available. \$10/night.

On-Site Camping Registration

\$10 per night for no electric

Camping on: Friday Saturday Total Fees: \$_____

Name: _____

Address: _____

City, State, Zip: _____

Phone: _____

Email: _____

Check one:

Trailer ___ Motor Home ___ Fifth Wheel ___

Length ___ feet x Width ___ feet Slide-out ___ Yes ___ No

Send in with your agility entries. Please enclose a **separate** check payable to Canine Mastery.

Directions

Canine Mastery - 102A Pond Street - Seekonk, MA 02771 - (508) 399-5867

From Rt.95 South of Attleboro

Take Exit 2A (Newport Ave) to 1st light. Take that left onto Cottage St. Go 1 mile and take a right onto Read St. Take 2nd right onto Pond St Watch for the Orion Industrial Park on your right (3/10 mile). Turn into the park, we are the second building on the left.

From Rt.95 North of Attleboro

Take Exit 3A Rt. 123. At the 2nd set of lights take a right onto County St. Follow along and after the Stone E Lea golf course take a left onto Read St. (There are signs for the animal shelter). Take the 2nd right onto Pond St. Turn right into the Orion Industrial Park in approximately 3/10 mile. We are the 2nd building on the left.

From Rte. 195 East or West

Take Massachusetts Exit 1. Follow 114 A (north). In approximately one mile you will reach a fork in the road, bear to the. This is Arcade Street. You will come to the intersection of Route 44. Go straight across and continue on Arcade to the end. This is the Jct. of Route 152. Take a right onto 152 north – Newman Ave. Follow along for about 5 miles. You will come to the intersection of Central Ave. (Which is after the Stop and Shop) Go ½ mile and take a left onto Pond Street. Watch for Orion Industrial Park on the left (2/10-mile). Turn into the park, we are the second building on the left.

To volunteer ☺ or for further information please contact

Kathy Buckley @ Canine Mastery 508-399-5867

Beginner Introduction to Herding Fun Day

Sunday April 26, 8:30 AM

given by Tenley Dexter

Open to all breeds.

Held at the Benson's Starshine Farm

33 Oliver Road, Lebanon, CT

Rain or shine (indoor work arena available)



The Fun Day will consists of a morning lecture explaining the basics of herding and the fundamental concepts of training, followed by a demonstration of the basic training steps and ending with an individual exposure to stock by the clinician of each dog entered.

COSTS:

\$45.00 per dog which includes the full day's schedule and lunch

\$20.00 per person for those just wishing to attend the lecture and observe the demo but not entering a dog to be worked, also includes lunch. Bring a chair and shade for your dog.

\$20.00 for additional dog ONLY if time and the schedule permits on the day of the clinic.

PRE ENTRY IS HIGHLY RECOMMENDED DUE TO SPACE LIMITS

Entries: made out on a ASCA Stock Trial entry (gotten at www.asca.org) and check made out to ASCNE can be sent to:

Tenley Dexter

PO Box 58

Gaylordsville, CT 06755

Ten11ey@yahoo.com

270-378-5910 Jan 1st - April 1st

860-354-9069 after April 1st

Directions from Rt. 2, take exit 13 (Rt.66) through Columbia Center (approx 10 miles). Take a right on to Rt. 87South and Go 4.6 miles (0.3 miles after "LogCabin" Restaurant and turn right onto Oliver Road. Second driveway on left #33 across from horse barn.



The Australian Shepherd Club of New England
invites you to attend our 5th Annual

May-Kin' It Happen

(Sanction pending)

Sunday, May 3, 2015

Rally and Obedience Shows

Canine Sports Center

Diamond Creek 416 Old Middle Street (Route 63)

Goshen, CT 06756

Held Indoors on mats, building opens at 8:00 on Sunday

*No entry shall be accepted from a dog or handler disqualified from the
ASCA Conformation program; a dog or handler disqualified from all
ASCA programs; or a person not in good standing with ASCA.*



Judging Schedule

Sunday	Obedience AM	Begins at 9:00 a.m. beginning with Utility	Linda Ferrullo
	Rally PM	Begins at 1:00 PM	Linda Ferrullo
		Prizes include placement ribbons	

Class Information
Obedience Classes:
Regular Utility A, B, Open CDX A/B & Open ODX A/B, Novice A & B, Beginner Novice A & B, Sits and Downs will be held after individual exercises.

Non-Regular Sub Novice, Beginner Novice A & B

Rally Classes: Masters A, B, C, Excellent A, B, C, Advanced A, B, C, Novice A, B, C

This is an ASCA sanctioned show, no food or corrections allowed

Entry Information
Entries: Limited to 30 regular class entries per show, Pre-entry or day of the show from 8:00 to 8:45am or when numerical limits are reached

Mail the completed signed form and a check made payable to ASCNE to:

Claudia Reed, 11 Silano Dr., Harwinton, CT. 06791,

860-485-1426 creedobagaussies@sbcglobal.net

- Obedience Entry Form: <http://www.asca.org/Portals/0/obedwtxentry.pdf>
 - Rally Entry Form: <http://www.asca.org/Portals/0/forms/rallyentrywtx.pdf>
 - Please print clearly and do not forget to sign the back of the entry form
 - Do not forget to sign and fill out emergency contact information.
 - Include a legible copy your ASCA Registration for each dog.
 - All Dogs must have proof of registration and rabies certificate available at the show.
 - For information regarding what Obedience classes you may enter, refer to the Obedience rules on the ASCA site: <http://www.asca.org/formsandrulebooks>
 - The Novice A Class is for handlers that have not placed a C.D. title on a dog from any registry and the dog does not have a C.D. title from any registry. For the Open A and Utility A classes, your dog must not have earned an Open or Utility title in any registry.
 - All dogs competing for ASCA Obedience titles are required to start at Novice and work through Utility regardless of Obedience titles awarded by other Registries. ASCA Obedience judges may not enter or handle in the A classes.
- All dogs must have an individual ASCA registration or LEP number or an ASCA tracking number to compete in ASCA sanctioned Obedience Trials.

Fees
Pre-entries: Obedience Classes \$20.00, All Non-Regular Classes \$18.00

Day-of-show entries: Obedience Classes \$22.00, All Non-Regular Classes \$20.00

Entries for pre-entry opens April 10 Closes April 24.

Registration & Tracking

All Australian Shepherds over the age of 6 months must be registered.

Effective January 1, 2004: All dogs six (6) months and older must have an individual ASCA registration or LEP number or and ASCA tracking number to compete in ASCA sanctioned Obedience Trials. A dog will be allowed to be shown at the trial where the handler applies for an ASCA tracking number. The handler will be issued a receipt by the Registration table valid for sixty (60) days to allow the Business Office time to issue the tracking number. Photo copies or originals of registration or tracking number papers must be presented to the Registration Table upon request when entering ASCA sanctioned Obedience Trials. Please visit www.asca.org for information and forms: <http://www.asca.org/Portals/812b34ca-1ab9-41bb-9dc9-d7b90411dbdc/trackapp.pdf>

Lodging

Accommodations That Accept Well Behaved Dogs, please confirm when calling

SOME MOTEL COURTESIES TO OBSERVE:

- Cover the motel's bedding with a sheet, whether or not you think your dog will get on the bed.
- If you crate your dog, please bring a towel to put under the crate to keep marks off the rug. Bring a towel to put under your dog's food dish.
- Make every effort to have your dog free of fleas BEFORE arriving.
- All poop must be picked up, bagged, and disposed of properly by the dog's handler. The Event Committee will excuse competitors who fail to pick up after their dogs at the test site or the motel.
- Don't leave your dog unattended. If you must leave, take them with you.
- When making reservations, verify the lodging takes dog and if they have a pet fees

Motels

Quality Inn,

395 E. Winsted Rd., Torrington
496-8808
They have some pet rooms

Litchfield Inn,

432 Bantam Rd., Rte 202, Litchfield,
567-4503
Will take pets

Days Inn,

492 E Main St., Torrington
496-0811
No pets

Campgrounds

Valley In the Pines Campground

www.rvthereyet.cc
36 Lucas Rd, Goshen
(860) 491-2032

Camp Mohawk

www.campmohawk.org
246 Great Hill Rd, Litchfield
(860) 672-6655

Hemlock Hill Camp Resort

www.hemlockhillcamp.com
118 Hemlock Hill Rd, Litchfield
(860) 567-2267

Directions

- <http://www.caninesportscenter.com/page.php?12>
- **From the North:** Rte. 8 South to Exit 44 in Torrington. Take Rte. 4 West to the Rotary in Goshen. Go left at the rotary, onto Rte. 63 South. Continue 2.0 miles and the Center is on the right - #416.
- **From the South:** Rte. 8 North to Exit 42 to Rte. 118 West to Litchfield. Turn right in the center of Litchfield onto Rte. 63 North. Continue North 4.3 miles and the Center is on the left - #416.
- **From Torrington:** Take Rte. 4 West to the Rotary in Goshen. Go left at the rotary, onto Rte. 63 South. Continue 2.0 miles and the Center is on the right - #416.

Veterinary Hospital

- Northwest Corner Veterinary Hospital, 646 Bantam Rd., Bantam, CT 06750 , 860-567-0766
- Litchfield Veterinary Hospital, 289 Torrington Road, Litchfield, Connecticut 06759, (860)567-1622
- Stonehill Kennel, 345 Sharon Turnpike (Rt. 4 West), Goshen, CT 06756, 860-491-2202

- There is no food available on-site.

- To volunteer or for more information:

Obedience Show Chair - call Alicia Campbell 860-309-4405 or e-mail to moonstone6295@yahoo.com



Complete premium found on the calendar page of the ASCNE website!



ASCA SANCTIONED ALL BREED AGILITY TRIAL (Open to ALL Dogs)

Hosted by

**The Australian Shepherd Club of New England
1st Annual May Showcase Agility Trial**

May 9 & 10, 2015

Showcase For Dogs

121 North Rd, East Windsor, CT

JUDGE:

Diane Harrison, Tipp City, Ohio

CLASSES OFFERED:

Regular 2 Runs per day

Jumpers (1 Run Saturday/ 2 Runs Sunday)

Gamblers (2 Runs Saturday, 1 Run Sunday)

For Novice, Open, and Elite

Championship STD/VET/JrH and ACE STD/SR Divisions

Pre-novice (2 runs Sunday)

Tunnelers (NADAC style fun run, 1 Run Saturday)

FEO entries accepted

LIMITED TO 350 Runs per Day

Entry by Postmark Date (not delivery date)

Please be sure that the envelope postmark is legible. Hand stamping by the Post Office is recommended.

NO POSIMARKS EARLIER THAN March 30, 2015

ENTRIES /MOVE-UPS CLOSE April 29, 2015 @ 9 PM

NOTICE TO EXHIBITORS

This trial will be held under the current rules and regulations of ASCA. Exhibitors, through submission of an entry, acknowledge that they are knowledgeable of current ASCA rules and regulations and agree to abide by all rules in effect at the time of this trial, including, but not limited to, the following:

- **This trial is open to all dogs** being at least eighteen (18) months of age, including purebred and non-purebred, except bitches in season, dogs suffering from any deformity, injury or illness that may affect the dog's physical or mental performance, or dogs exhibiting any signs of aggression toward people or other dogs.
- Dogs are not required to have an ASCA Registration, ASCA LEP, or Tracking number to enter this trial. However, to receive ASCA titling certificates, refer to the next bullet. Handlers do not need to be ASCA members. However, no entry will be accepted from anyone not in good standing with ASCA or any dog/handler disqualified from the ASCA agility program.
- **Receipt of ASCA Titling Certificates** - Starting 1/1/2003 for non-ASCA registered dogs - In order to have ASCA qualifying legs tracked and to receive ASCA titling certificates, each non-ASCA registered dog will be required to have an ASCA Tracking Number. This is a one-time fee of \$10/dog. At the time of applying for the tracking number, the individual owner must also be an ASCA member (minimum membership type of Service). ASCA membership does not need to be maintained in subsequent years. It will be the responsibility of the owner to identify to ASCA the shows and legs earned when applying for a Tracking Number after ASCA qualifying legs have already been earned. The ASCA Membership and Tracking Number Application form is included in this premium. For additional membership information, please go to www.asca.org.
- Current jump height table, breed exemption list, description of classes, levels, and divisions can be found at ASCA's web site (ASCA.org).
- **THE MANAGEMENT** will not be responsible for the loss or damage to any dog exhibited, or for the possessions of any exhibitor whether the result was by accident or any other cause. It is distinctly understood that every dog at this event is in the care and custody and control of his owner or handler during the entire time the dog is on the show premises. Any exhibitor whose dog and/or children create unnecessary disturbances or repeatedly engage in unruly or disruptive behavior may, at the discretion of the Show Committee be asked to leave the show site. **In such case, no refund of fees paid will be made and the ASCA office will be informed of the problem.**
- Agility obstacles will include: rubberized slatted contact obstacles, (A-Frame, Dog walk), rubberized non-slatted teeter, open tunnels, solid barrel closed tunnel, non-winged jumps, winged jumps, double bar jump, replaceable tire and 24" weave poles.
- Safety shall always be of foremost consideration in actions and conduct by handlers at all times.
- No leads, collars, food toys, other aids or devices will be permitted on the course or within 10 feet of the rings at any time.
- No entry shall be accepted from a handler or for a dog disqualified from the ASCA Agility program, disqualified from all ASCA programs, or anyone not in good standing with ASCA.

RULES & REGULATIONS:

- ASCA rules ASCA Business Office, 6091 E State Hwy 21, Bryan, TX 77803. Web: www.asca.org; e-mail: activities@asca.org

TRIAL COMMITTEE

Agility Trial Chairperson	Wendy Richmond, wussiedogs@pbonline.net 845-389-6123
Trial Secretary	Barbara Miller, barbaramiller@hotmail.com , 860-693-4807
Chief Ring Steward	Linda Prager, Audrey McKay
Chief Course Builder(s)	Mike Kurdo, Lee Prager
Chief Scorekeeper	Melissa Ferguson



ALL-BREED ASCA Sanctioned* AGILITY TRIAL



Hosted by
Australian Shepherd Club of New England
May 23 & 24, 2015
American K9 Country, Amherst, NH
(* sanctioning pending)

JUDGE:

Mike Black (TX)

CLASSES OFFERED:

Regular, Jumpers, Gamblers (each 2 Runs/Day)
Novice, Open and Elite Levels
Championship STD / VET / JrH and ACE STD / SR Divisions
Pre-Novice Regular (2 Runs / Day)
Exhibition Class for Retired Canine Competitors (Saturday only)
FEO Entries will be Accepted

LIMITED - 350 Runs per Day

NO POSTMARKS EARLIER THAN April 2, 2015

ENTRIES CLOSE May 13, 2015 @ 9 PM

Pre-entry only

(Premium will be available on-line at www.ascne.org – mailed by request only)

For a premium contact

Jean Janotta
24 Country View Dr., Raymond, NH 03077-2479
(603) 895-5436 jjanotta@myfairpoint.net

DIRECTIONS TO TEST SITE:

From the South (Nashua) – Take Rt. 3/Everett Turnpike (North) to the Manchester I-293/101 West exit. Follow signs towards 101 West (Bedford – Milford). **At the Route 101/114 interchange, take a left and continue following 101W. American K-9 Country is located on Rt. 101, approximately 6 miles from the Rt. 114 interchange. It is on the right, 2 miles after The Weathervane Restaurant, across from Camp Road at the blinking yellow light.

From the South (Boston) – Follow I-93 North to I-293 Manchester to 101 West. Follow signs towards 101 West (Bedford – Milford). Follow from ** above.

From the North (Concord) – Follow I-93 South to I-293 Manchester to 101 West. Follow signs towards 101 West (Bedford – Milford). Follow from ** above.

From the East Coast (Portsmouth) – Take 101 West towards Manchester/Bedford. Follow Rt. 101 West thru Manchester past the Mall of NH. Continue to follow 101W towards Bedford/Milford). Follow from ** above.

From the West (Keene): Follow Rt. 101 East towards Manchester/Bedford. Watch for Salzburg Square Shopping Complex (Yellow old type buildings) on your left. American K-9 Country is approximately 1 mile past Salzburg Square, on the left, at blinking yellow light across from Camp Road.

FOOD / VENDORS: Breakfast and lunch for volunteers will be provided by ASCNE. No food vendor on site.

ACCOMMODATIONS: Accommodations will be listed in the premium



ALL-BREED ASCA Sanctioned* AGILITY TRIAL



Hosted by
Australian Shepherd Club of New England
June 6 & 7, 2015
Westfield Fairgrounds, Westfield, MA
(* sanctioning pending)

JUDGE:

Pamela Bryant Meeks (TX)

CLASSES OFFERED:

Regular (2 runs/day), Jumpers (1 run Sat/2 runs Sun), Gamblers (2 runs Sat/1 run Sun)
Novice, Open and Elite Levels
Championship STD / VET / JrH and ACE STD / SR Divisions
Pre-Novice Regular (2 Runs / Sunday)
Tunnelers to benefit ARPH (Saturday only)
FEO Entries will be Accepted

LIMITED - 350 Runs per Day

NO POSTMARKS EARLIER THAN April 15, 2015

ENTRIES CLOSE May 27, 2015 @ 9 PM

Pre-entry only

(Premium will be available on-line at www.ascne.org – mailed by request only)

For a premium contact

Jean Janotta
24 Country View Dr., Raymond, NH 03077-2479
(603) 895-5436 jjanotta@myfairpoint.net

DIRECTIONS TO TEST SITE:

From Interstate 91: Take Exit 15, Holyoke Mall at Ingleside. Turn left at bottom of ramp. Go to second set of lights and turn right onto Homestead Ave. At next light turn left onto Rt. 202. Go approximately 5 miles. Cross Rt. 10 (at light) and go to cemetery on the left. At stop sign turn left. Show site is on the left, about 1 1/2 miles.

From the Massachusetts Turnpike—I-90: Take exit 3. Turn right at the light at the end of the ramp. Go about 100 ft. and make a right onto Arch Road. (Westfield Motor Inn/Westfield Econo Lodge is on the corner.) Go about 1.5 miles. the Southern States Building on your right. , make a left onto Cabot Road. Go to the end of Cabot and make a right onto Russellville Rd. Show site is a short distance up on the right.

FOOD / VENDORS: There will be a food truck on the premises.

ACCOMMODATIONS: Accommodations will be listed in the premium



Tenth* Annual ASCNE *Sanction pending COLORS OF SUMMER

June 6 - 7, 2015
Westfield Fairgrounds
137 Russellville Road
Westfield, MA



3 Conformation Shows Saturday and 2 Conformation show Sunday
2 Rally Shows on Saturday and 2 Obedience Shows on Sunday

Judging Schedule

<u>Saturday</u>	Conformation	9:00 AM Noon - or if it ends later, 30 minutes after end of first show 3:00 PM - or if it ends later, 30 minutes after end of second show	Emmy Adasiewicz, MA, Sr Breeder Judge Jasa Hatcher, CA, Sr Breeder Judge Marge Stovall, WA Sr Breeder Judge Penny Haynes, NY
	Rally	9:00 AM Noon, or 30 minutes after the AM show ends if it ends later than 11:30	Penny Haynes, NY
	Conformation	9:00 AM Noon or if it ends later, 30 minutes after end of first show	Susan Moorehead, NC, Sr Breeder Judge Nikkki Marenbach, NY, Sr Breeder Judge Tibby Chase, MA
<u>Sunday</u>	Obedience	9:00 AM Noon, or 30 minutes after the AM show ends if it ends later than 11:30	Tibby Chase, MA

General Entry Information

Complete each dog on a separate entry form for each day.
Mail the completed signed form and a check made payable to ASCNE
All dogs must have individual ASCA registration and rabies certificate available.
Opens May 1 and Close May 31

<u>Conformation</u>	<p>Held outside on grass Regular – Altered and Intact Non-Regular - Junior Showmanship, 2-4 puppy, 4-6 puppy, Veterans This is a RECYCLE PRIZE show-- Rosettes and Ribbons will be awarded upon winning a class Pre-entries: \$20 per entry for regular Special: Pre-entry all five shows - \$90 regular Puppies: \$5.00 per show Day of show entries: taken 7:30 to 8:30 AM –and 11:30 AM to 12:30 pm \$23 per entry for regular and \$18 per entry non-regular classes. Juniors \$5 per show or FREE with the same dog entered in an additional class Mail to: Antonia Lake, 494 Kinney Brook Rd., Worthington, MA. 01098 To volunteer or for additional information, contact: Kelly Sweeney, bluedogs123@gmail.com, 860-480-3965</p>
<u>Obedience and Rally</u>	<p>In the red barn, covered, with a dirt floor - Prizes include placement ribbons Rally Classes - Novice A, B & C, Advanced A, B & C, Excellent A, B, & C, Masters A, B & C Regular Obedience – Novice A & B, Open A/B CDX/ODX, Utility A, B, Optional Titling Class - Beginner Novice A, B Non-Regular Obedience - Sub Novice, Wild Card - Novice, Open, and Utility Pre-entries: \$18 for Regular \$14 for Non-Regular classes Special – Two pre-entries one day for one dog \$30.00 regular or \$25 non-regular. Day of show entries: Day of show entries taken 8:00 – 8:30 AM for AM show 11:00 – 11:30 for PM show \$20.00 for Regular \$15.00 for Non-Regular classes. Mail to: Dianne Barrett, 336 E Putnam Rd, Putnam CT 06260 To volunteer or for additional information, contact: Dianne Barrett dianne.barrett@att.net or (860) 753-2024</p>

**Registration
& Tracking**

All Australian Shepherds over the age of 6 months must be registered.
Effective January 1, 2004: All dogs six (6) months and older must have an individual ASCA registration or LEP number or and ASCA tracking number to compete in ASCA sanctioned Obedience Trials. A dog will be allowed to be shown at the trial where the handler applies for an ASCA tracking number. The handler will be issued a receipt by the Registration table valid for sixty (60) days to allow the Business Office time to issue the tracking number. Photo copies or originals of registration or tracking number papers must be presented to the Registration Table upon request when entering ASCA sanctioned Obedience Trials. Please visit www.asca.org for information and forms.

Lodging

Hotels that accept dogs, please confirm when calling. PLEASE be courteous and clean up after your dog!!!

Econolodge: 2 Southampton Road, Westfield, MA (413)568-2821

Exit 3 off Mass Pike

Econolodge: 1533 Elm Street, West Springfield, MA (413)734-8278

Exit 4 off Mass Pike

Red Roof Inn: 1254 Riverdale Street, West Springfield, MA (413)731-1010

Exit 4 off Mass Pike

Hampton Inn: 1011 Riverdale Street, West Springfield, MA (413)732-1300

Exit 4 off Mass Pike

Red Carpet Inn: 560 Riverdale Street, West Springfield, MA (413)733-6678

Exit 4 off Mass Pike

Residence Inn: 64 Borders Way, West Springfield, MA (413)732-9543

Exit 4 off Mass Pike

RV

RV and tent camping available. \$20/Campers, \$10/Tents. Spaces are not reserved.

Registration

Make checks
payable to ASCNE
and mail to:
Deb Keach-Tomes,
122 Broad St
Pascoag, RI 02859-
2612

On-Site Camping Registration

\$15.00 per night for RVs and \$10.00 for Tent Camping

Camping On: Friday Saturday Sunday Total Fees \$

Name _____

Address _____

City, State, Zip _____

Phone _____

Email _____

Select Camping Style

RV

Tent

Directions

From Mass Pike

Take Exit 3

Turn Right off the exit.

First right (at Wendy's and Econolodge) onto Arch Road.

Arch Road becomes Lockhouse Road

Turn slight LEFT onto Cabot Road

Turn right onto Russellville Road

Fairgrounds is approximately ½ mile on Right

Veterinary Hospital

Mobil Vet Services of Western MA - 413-376-8956 - Open 7 days a week 6 am to 8 pm